



COSMOLINGUA
INSTITUTE OF FOREIGN LANGUAGES

Learn Japanese



COSMOLINGUA PROFILE

Cosmolingua is a leader and the most trusted name in imparting Foreign Language Training, Corporate Language Capsules and range of Multilingual Services. The Institute was registered in 2006 and is empanelled with the Ministry of Defense, Government of India in 2008.

The institute is proudly engaged with imparting education in all major European languages, like French, German, Italian, Spanish, Swedish, Dutch, Portuguese, in various Asian languages such as Chinese, Japanese, Korean, Thai and also in numerous other important languages like Hindi, Arabic, Urdu and many more.

With over 15 years of Experience, Expertise and Excellence, today we are the most trusted global Brand in providing Language Training and Services which assists Individuals, Business, Corporate Giants, NGOs and Government Agencies in achieving their language proficiency goals.

Cosmolingua is a one stop complete language solution!

OUR MISSION

To develop and strengthen the linguistic skill of students, through tailor made modern teaching techniques. We are dedicated towards making our students globally competent and competitive with excellent communication skill.

OUR VISION

To become the leaders in both the national and international markets by rendering quality educational services with respect to time-frames. Moreover, with our responsive service to the public sector, business community as well as private citizens, we aspire to realize the intercultural communication goals.

OUR QUALITY POLICY

We are officially registered under quality certification ISO 9001:2008. We provide the provision for education and training in all Foreign and Indian Languages and related services. Being an expert in our field, we have a proven track record of providing high quality services in the field of Foreign Language Training and Multilingual Solutions.

OUR INFRASTRUCTURE

With our Head Office located at Dwarka, New Delhi, we are empowered with state-of-the-art infrastructure. Curriculum, Administrative and Professional Development Services are coordinated from Head Office where our staff and leadership team is located. We work in a strictly academic atmosphere where the students are exposed to state-of-the-art classroom facilities. Classes are held in fully air-conditioned classrooms with the aid of audio/visual sessions and the institute is well-equipped with all the pedagogical materials like books, DVD, videos, library etc.

TEACHERS/TRAINERS

Our trainers are very friendly and co-operative who always endeavors to understand the requirement of trainees. They are either native or having domain proficiency in their respective languages, holding Master or Doctorate degree. They are highly qualified and have different styles of teaching catering to varied functional needs thus giving varied and stimulating instructions. Our professional trainers deliver focused training providing the language and linguistic skills that one will require to excel.

© Nations Online Project



CHINA

RUSSIA
Primorsky Krai

Sea of Okhotsk

Hokkaidō
北海道

Sea of Japan
(East Sea)

NORTH PACIFIC
OCEAN

Honshū
本州

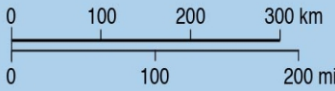
Shikoku
四国

Philippine Sea

Kyūshū
九州

JAPAN

- International boundary
- National capital
- Prefecture capital
- City, Town
- Highway
- Road
- Airport



About Japanese



Japanese (日本語, Nihongo, [ihon̩ o] (listen)) is spoken natively by about 128 million people, primarily by Japanese people and primarily in Japan, the only country where it is the national language. Japanese belongs to the Japonic or Japanese-Ryukyuan language family. There have been many attempts to group the Japonic languages with other families such as the Ainu, Austroasiatic, Koreanic, and the now-discredited Altaic, but none of these proposals has gained widespread acceptance.

Little is known of the language's prehistory, or when it first appeared in Japan. Chinese documents from the 3rd century AD recorded a few Japanese words, but substantial Old Japanese texts did not appear until the 8th century. From the Heian period (794–1185), there was a massive influx of Sino-Japanese vocabulary into the language, affecting the phonology of Early Middle Japanese. Late Middle Japanese (1185–1600) saw extensive grammatical changes and the first appearance of European loanwords. The basis of the standard dialect moved from the Kansai region to the Edo region (modern Tokyo) in the Early Modern Japanese period (early 17th century–mid 19th century). Following the end of Japan's self-imposed isolation in 1853, the flow of loanwords from European languages increased significantly, and words from English roots have proliferated.

Japanese is an agglutinative, mora-timed language with relatively simple phonotactics, a pure vowel system, phonemic vowel and consonant length, and a lexically significant pitch-accent. Word order is normally subject–object–verb with particles marking the grammatical function of words, and sentence structure is topic–comment. Sentence-final particles are used to add emotional or emphatic impact, or form questions. Nouns have no grammatical number or gender, and there are no articles. Verbs are conjugated, primarily for tense and voice, but not person. Japanese adjectives are also conjugated. Japanese has a complex system of honorifics, with verb forms and vocabulary to indicate the relative status of the speaker, the listener, and persons mentioned.



Benefits of Learning Japanese

Career Scope of Learning Japanese language

Work or Study in Japan

Demand for Japanese Translator, Interpreter & Trainer

Low Competition and High Competitive edge

Unique Culture and Music & Movies

JAPANESE

OUR COURSES



1. Certificate Diploma & Advance Diploma Courses
2. Short Duration Courses
3. Translation & Interpreter ship Courses
4. Exam preparatory courses
5. Corporate Language Training
6. Courses For Military and Diplomatic Attaché
7. Teachers Training in Foreign Languages
8. One year Job oriented Diploma Courses
9. BA , MA , PHD in Foreign languages
10. Courses for School Going Children.

TEACHING METHODOLOGY



The languages are taught through a pragmatic, proven and communicative approach. We address each student's individual need. Our methodology focuses on:

1. Intensive coaching in grammar, sentence structure and vocabulary
2. Reading and listening comprehension and written exercises
3. Maximum spoken communication
4. Expressing with accuracy without losing fluency
5. Role plays practice in relevant social situations
6. Developing independent learning skills and strategies for better communication

EXAMINATION

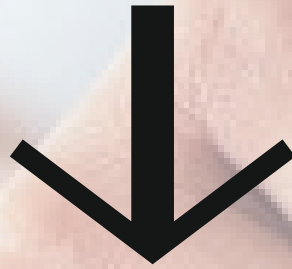


At the end of each level, students' progress will be regularly monitored and examined. After every level, an exam will be conducted to check the student's level of comprehension. At the end of the course, the student's knowledge is again tested through a final written exam and also a viva voce Examinations will be held at the institute itself.

EXAM WE PREPARE

We prepare the students for the Following International Exam which is either conducted by the embassies or Cultural centers which helps in immigration purposes. Following Exams we prepare:

JAPANESE



日本語能力試験

JLPT Japanese-Language
Proficiency
Test

CERTIFICATES

On successful completion of the course, a certificate from Cosmolingua will be awarded which will clearly specify that you have completed the particular course from the institute for specified duration.

Enrolment No.: _____



ISO 9001:2008

Cosmolingua[®]

EDU SERVICES PVT. LTD

Cosmolingua Institute of Foreign Languages
New Delhi

Certificate
LANGUAGE LEVEL - A1

We certify that _____ has successfully completed
Basic Level of _____ Language Course and passed exams equivalent
to Level - A1 as per the Common European Framework of Reference for Languages
(CEFR) held in _____ at Cosmolingua Institute of Foreign Languages.


Director


Course Co-ordinator

Date of Issue:-
Place: New Delhi

OTHER SERVICES

→ Corporate Language Training

→ Language Proficiency Test

→ Translation & Interpretation

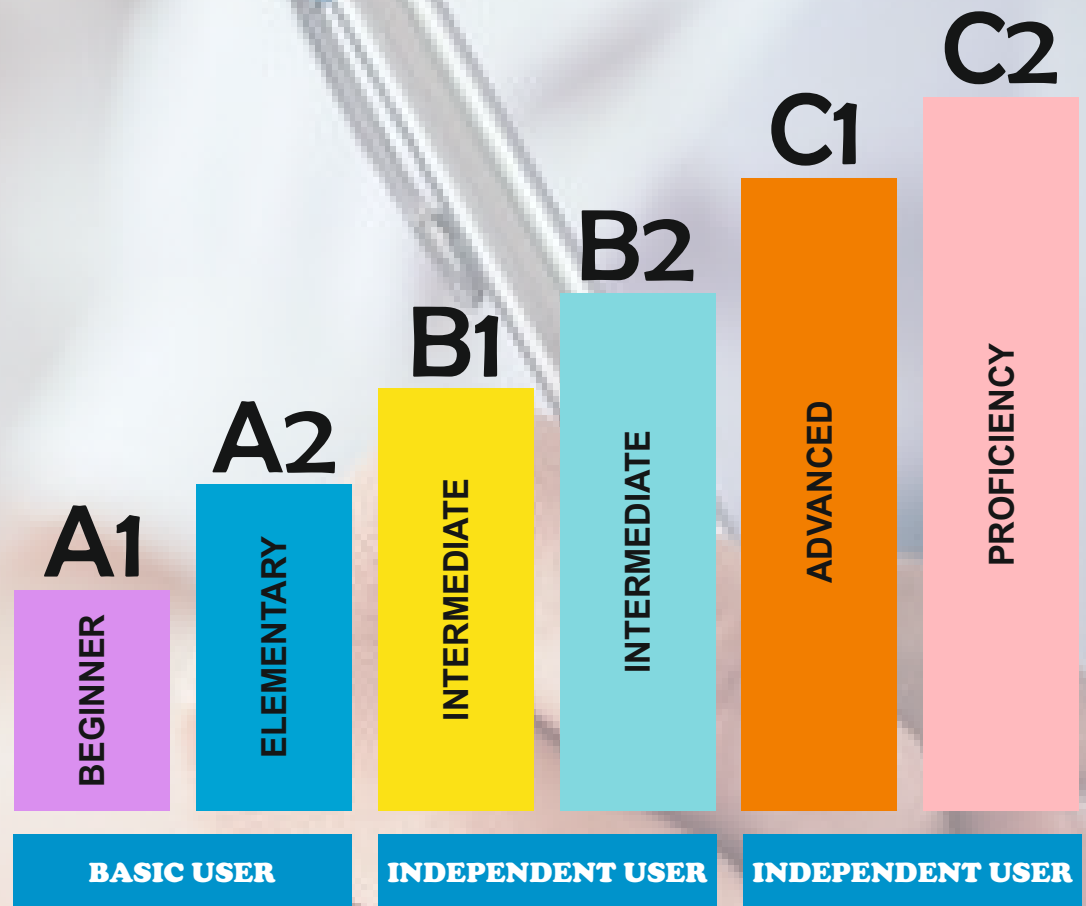
→ Educational Consultancy Services

→ Multilingual Data Collection

→ Hr Services



CEFR PROFICIENCY LEVEL



N5

The ability to understand some basic Japanese.

Reading

- One is able to read and understand typical expressions and sentences written in hiragana, katakana, and basic kanji.

Listening

- One is able to listen and comprehend conversations about topics regularly encountered in daily life and classroom situations, and is able to pick up necessary information from short conversations spoken slowly.

N4

Reading

- One is able to read and understand passages on familiar daily topics written in basic vocabulary and kanji.

Listening

- One is able to listen and comprehend conversations encountered in daily life and generally follow their contents, provided that they are spoken slowly.

N3

Reading

- One is able to read and understand written materials with specific contents concerning everyday topics.
- One is also able to grasp summary information such as newspaper headlines.
- In addition, one is also able to read slightly difficult writings encountered in everyday situations and understand the main points of the content if some alternative phrases are available to aid one's understanding.

Listening

- One is able to listen and comprehend coherent conversations in everyday situations, spoken at near-natural speed, and is generally able to follow their contents as well as grasp the relationships among the people involved.



N2

Reading

- One is able to read materials written clearly on a variety of topics, such as articles and commentaries in newspapers and magazines as well as simple critiques, and comprehend their contents.
- One is also able to read written materials on general topics and follow their narratives as well as understand the intent of the writers.

Listening

- One is able to comprehend orally presented materials such as coherent conversations and news reports, spoken at nearly natural speed in everyday situations as well as in a variety of settings, and is able to follow their ideas and comprehend their contents. One is also able to understand the relationships among the people involved and the essential points of the presented materials.

N1

Reading

- One is able to read writings with logical complexity and/or abstract writings on a variety of topics, such as newspaper editorials and critiques, and comprehend both their structures and contents.
- One is also able to read written materials with profound contents on various topics and follow their narratives as well as understand the intent of the writers comprehensively.

Listening

- One is able to comprehend orally presented materials such as coherent conversations, news reports, and lectures, spoken at natural speed in a broad variety of settings, and is able to follow their ideas and comprehend their contents comprehensively. One is also able to understand the details of the presented materials such as the relationships among the people involved, the logical structures, and the essential points.



JOB OPPORTUNITIES

**Teaching
Translator
Interpreter
BPO
Tourism
Foreign Services**



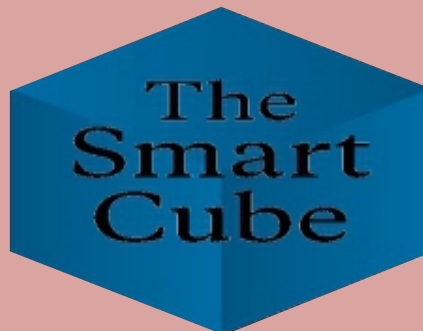
TOP JAPANESE COMPANIES IN INDIA

- Adeka Corporation.
- Ahresty Corporation.
- Ajinomoto Co., Inc.
- Alps Electric Co Ltd.
- Asics Corporation.
- Bridgestone Corp.



OUR TRUSTED CLIENTS

Top Government Agencies as well as National and international companies have continuously reposed Trust in our Training Program me since 2006.



Thank you

**Enhance your Communication Skills
Move beyond Anglophone world
Excel yourself globally**



Learn Languages :

French
Chinese
Arabic
Burmese
Japanese
Swahili
Persian
Portugese
German
Spanish
Thai
Russian
Polish
Hungarian
Italian
Sinhala
Turkish
Armenian
Dutch
Swedish
Latin
Korean
Pashto
Indonesian
Vietnamese
Greek
Albanian
Nordic
Hebrew
Dari
Divehi
Urdu
& Many More



info@cosmolingua.in



011-45452324, 45452326



9999910063



Cosmolinguaa@gmail.com



105, Block A, Sector 8 Dwarka, Dwarka, Delhi, 110077